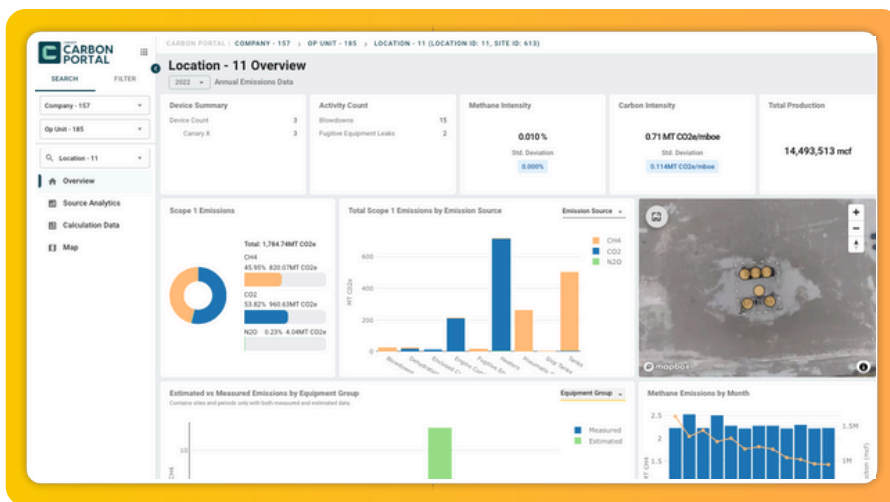


Carbon Portal

Introducing **Project Canary's Carbon Portal** — an emissions accounting software solution to streamline **calculating, tracking, visualizing, and reporting emissions**. This includes emissions inventory data for regulatory (Subpart W, Subpart NN, Permit Compliance) and voluntary initiatives (OGMP 2.0, GTI Veritas).

Together with our SENSE monitoring platform, operators can now house and access **all emissions information in one place**. Carbon Portal is available to customers today to support facility-level reporting, voluntary framework reconciliation needs and registry integration; with more features coming!



Carbon Portal
is your hub for GHG
Inventories.

Carbon Portal is Project Canary's
emissions data software for GHG
inventory accounting

DESIGNED TO ORGANIZE AND VISUALIZE DATA FOR:

Complete Emissions Profiles

- ✓ Organize and visualize corporate, facility and segment inventories
- ✓ Scope 1 emissions and corporate-level accounting

Regulatory Reporting

- ✓ Facility-level inventories with auditable calculation details
- ✓ Subpart W reporting based on current and new EPA rules
- ✓ Criteria pollutant permitting support

Voluntary Frameworks

- ✓ Compare inventory estimates with data from various measurement methodologies
- ✓ Supports reconciliation with granular views by equipment or sources
- ✓ Adjustable emissions factors and easily save factor scenarios

Real-Time Emissions Calculations

- ✓ Flexible data integration that accommodates your current capabilities
- ✓ Direct system integration to pull operating inputs and calculate your emissions

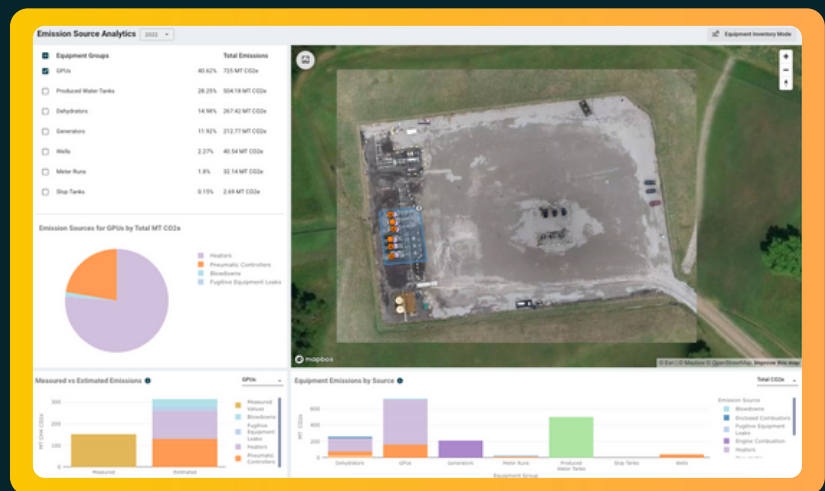


SOURCE ANALYTICS

The Source Analytics page supports reconciliation for **measurement-informed inventories** by focusing on a comparison of **Measurements vs. Estimates**. This page maps equipment sources to equipment groups for easy comparison. Additionally, you can visually see the equipment and source locations across the gas network.

WHY IT MATTERS:

1. We aggregate multiple measurement technologies across all assets for a comprehensive emissions picture.
2. Maximize the value of your measurements — use them to align with OGMP/Veritas, improve estimates, and update GHGRP emission factors.

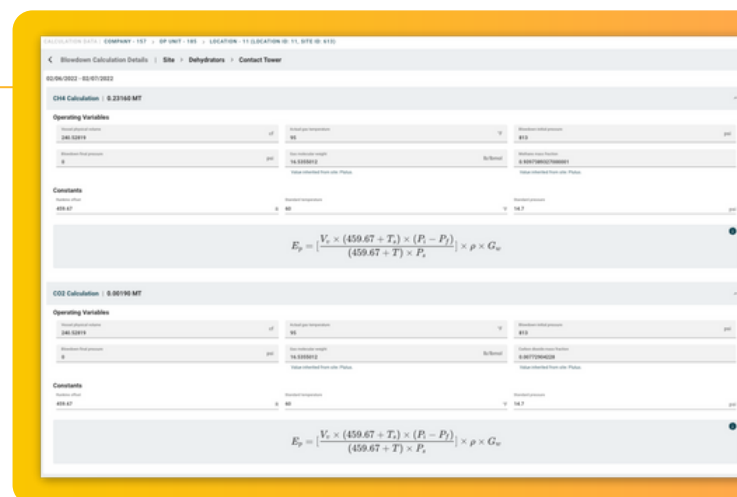


- ✔ Equipment Groups
- ✔ Visual Site Map
- ✔ Emission Sources
- ✔ Measured vs. Estimated

CALCULATIONS PAGE

The Calculations page allows you to dig into the **details behind your site-level inventory** for regulatory (Subpart W) and voluntary purposes (OGMP 2.0).

- ✔ Facility and Asset-Level Details
- ✔ Calculate GHG & Criteria Pollutants
- ✔ Subpart W Reporting
- ✔ Set alerts on a pollutant-and asset-level





Depth & Breadth of Expertise & Tailored Support



ADVANCED ANALYTICS

Detailed geospatial data to elevate our analytic capabilities. By linking EPA-defined emission sources to physical, on-site equipment groups, operators can identify root causes and easily see the impact of improved emissions calculations.



MEASUREMENT EXPERTISE

Methane measurement is our core capability. Our range of sensors and direct API connections with third party providers can meet all operator needs from continuous to intermittent solutions at various levels of fidelity. Consolidating multiple sources of data directly into Carbon Portal supports measurement-informed inventories and maximizes the value of advanced measurement technologies.



EXTENSIVE ONBOARDING SUPPORT

Our team of experts helps you consolidate your data and ease the burden of creating a site-by-site inventory. We will be with you every step of the way.



CUSTOM BUSINESS INTELLIGENCE

Our in-house team helps you understand your data and maximize value. We create custom reports and case studies based on your objectives, including understanding differences between inventory and measurement data to get you on the path to reconciliation.

CARBON PORTAL IS AVAILABLE TODAY

Carbon Portal is available today to all customers. New features are being rapidly developed throughout 2025.

ONBOARDING SUPPORT

Our team will work with you to make onboarding as easy as possible. As a baseline, we require source-level inventory for all equipment. We are open to receiving csv exports or building integrations into third-party data management systems.

FOR MORE INFORMATION, CONTACT YOUR PROJECT CANARY CUSTOMER SUCCESS REPRESENTATIVE.